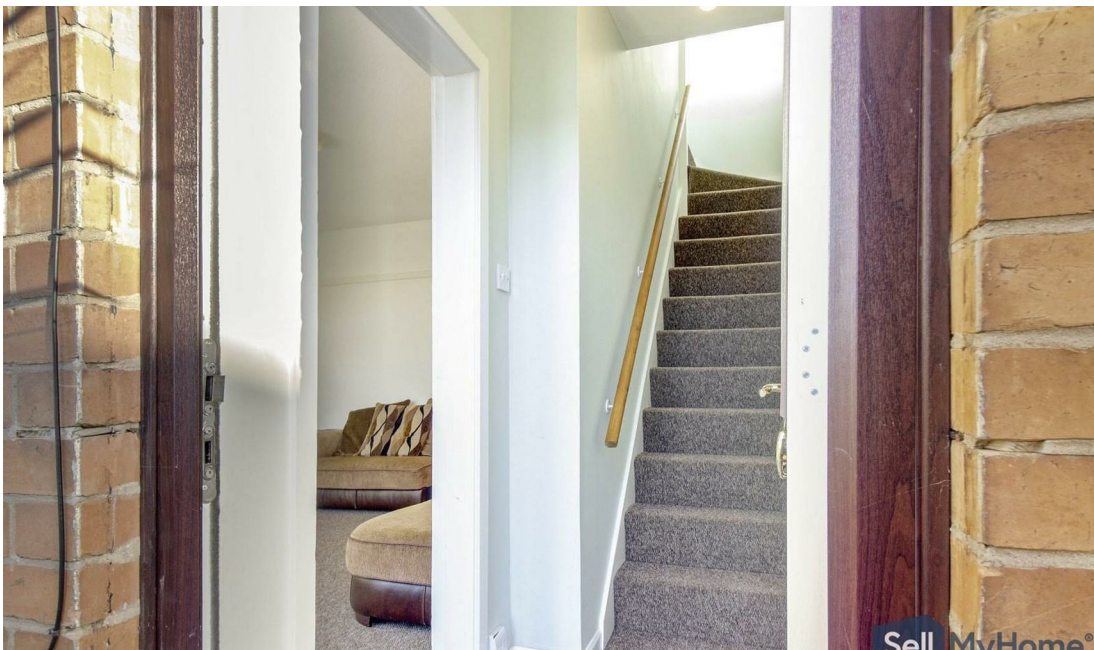




Lorraine Road, Leicester, LE2

2  1  1  D 

Sell MyHomeTM
.co.uk



- TWO BEDROOM SEMIDETACHED HOUSE
- OFF ROAD PARKING
- LOCAL AMENITIES NEARBY
- IDEAL LOCATION
- CORNER PLOT
- DOWNSTAIRS WC
- CLOSE TO CITY CENTRE

SellMyHome are pleased to present to the market this two bedroom semi detached house in Aylestone, Leicester.

As you enter the property you will find an entry way with a doorway to the lounge on the left and the stairs leading to the upper floor directly in front. The lounge is spacious and benefits from a bay window. Leading on from the lounge is the kitchen, which is sizeable and offers ample storage along with access to a downstairs WC and the rear garden. Heading upstairs, there are two well sized double bedrooms and a family bathroom with four piece bathroom suite.

Externally, the property benefits from a corner plot with a large front yard, offroad parking and a garden that wraps around the house.

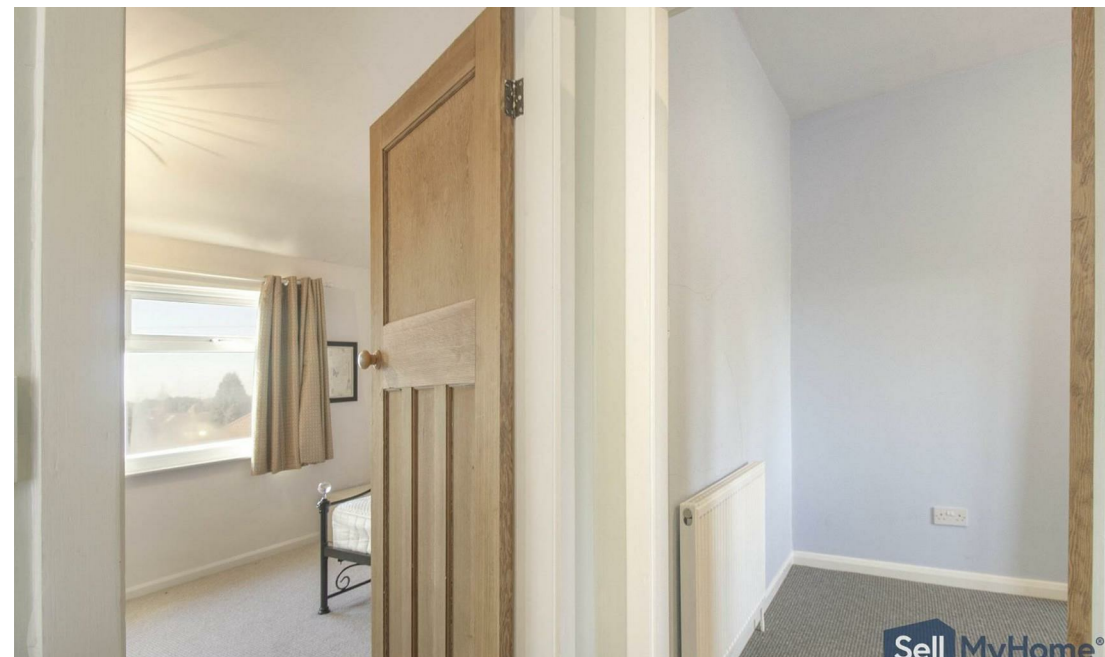
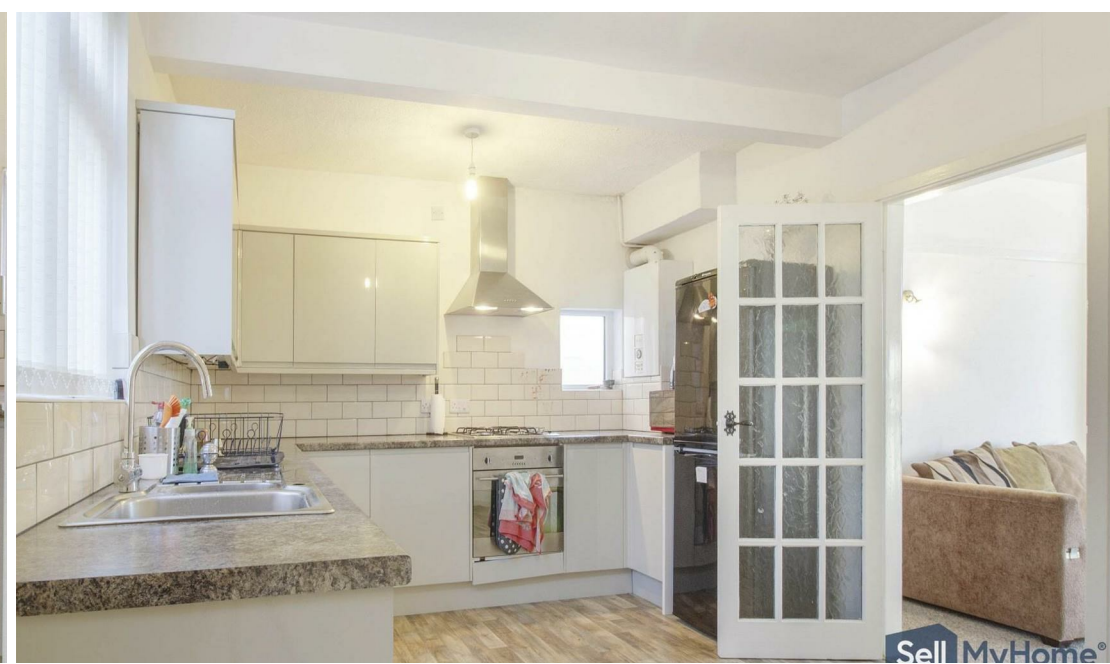
The house is situated in the Aylestone area and offers plenty of convenience with an Aldi supermarket nearby and easy access into the city centre along Aylestone Road.

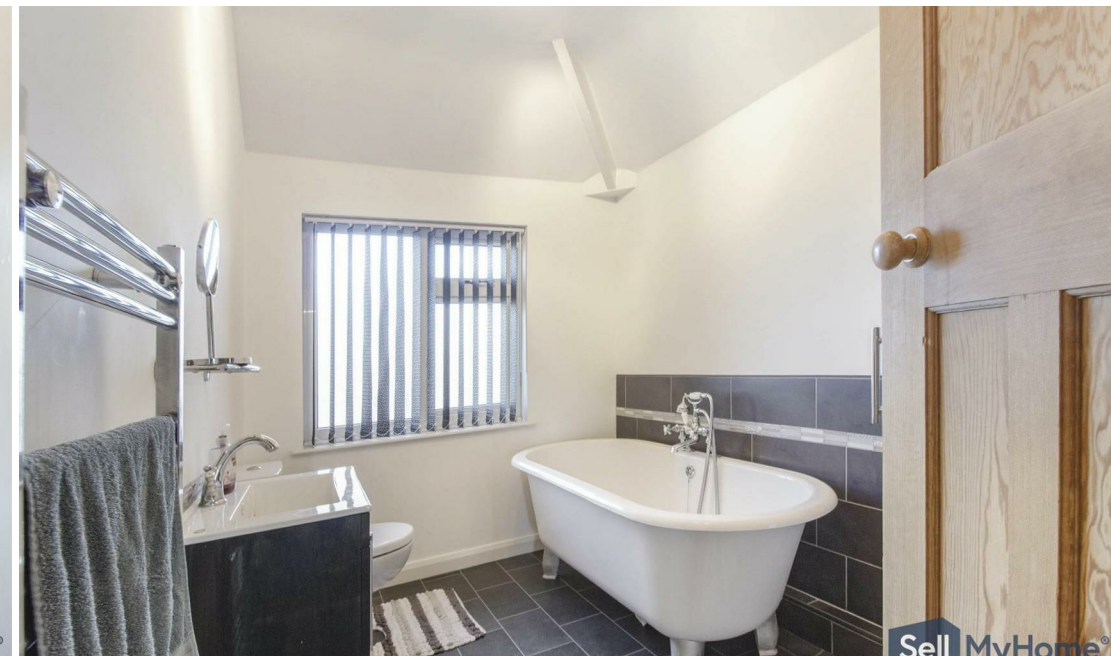
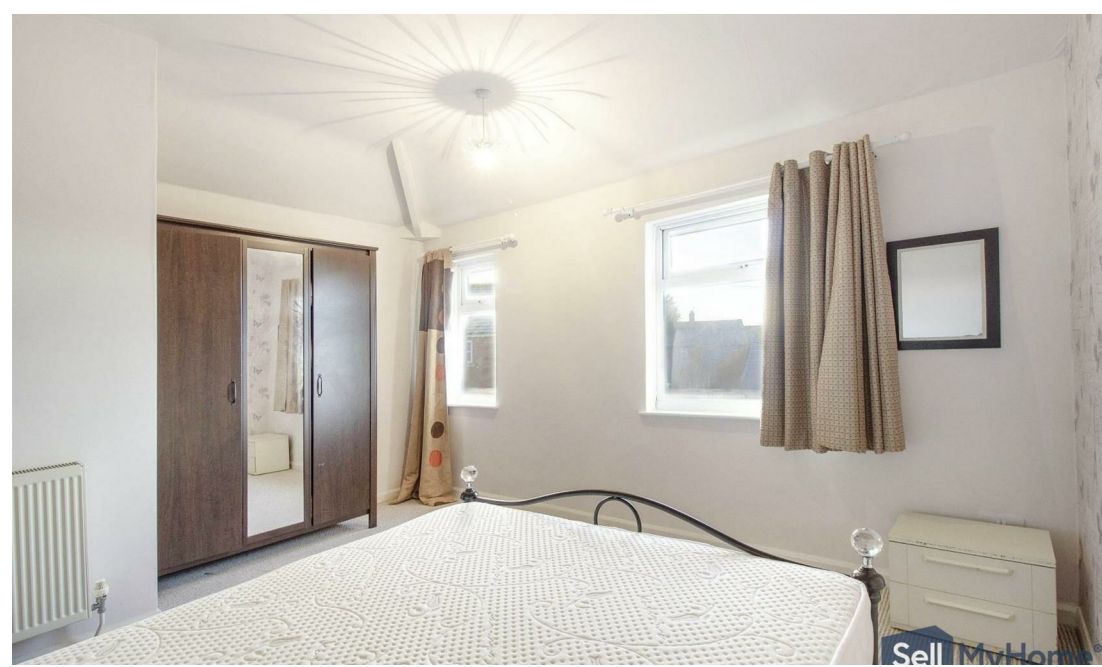
This property is sure to appeal to those looking for a first home or a suitable investment property so please call SellMyHome now to book your viewing!

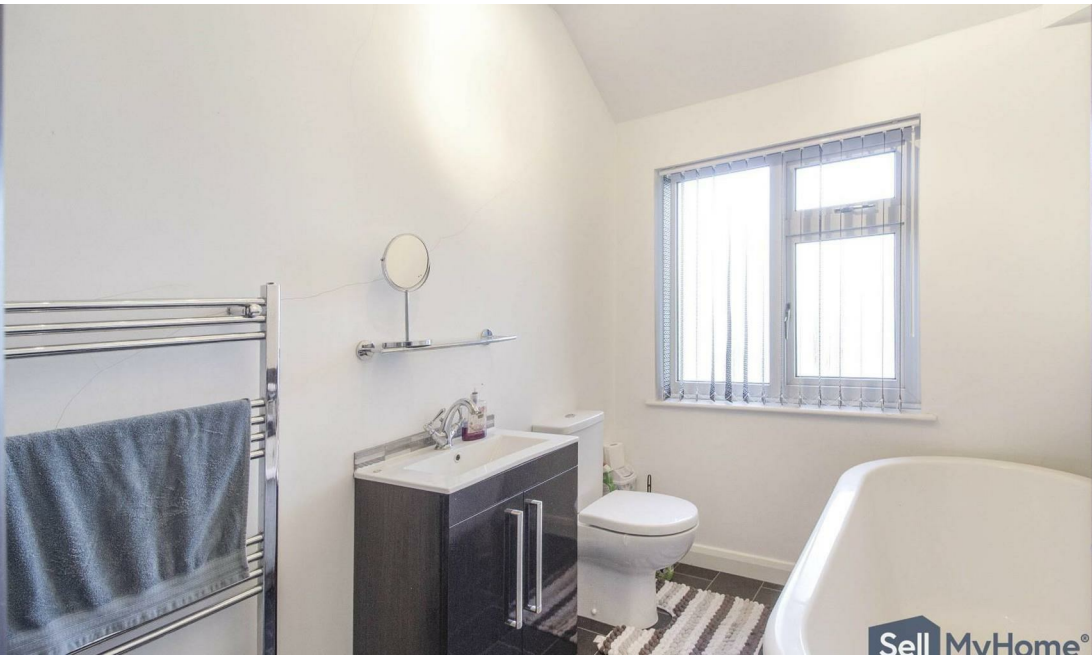
Tenure: Freehold




Offers Over: £190,000







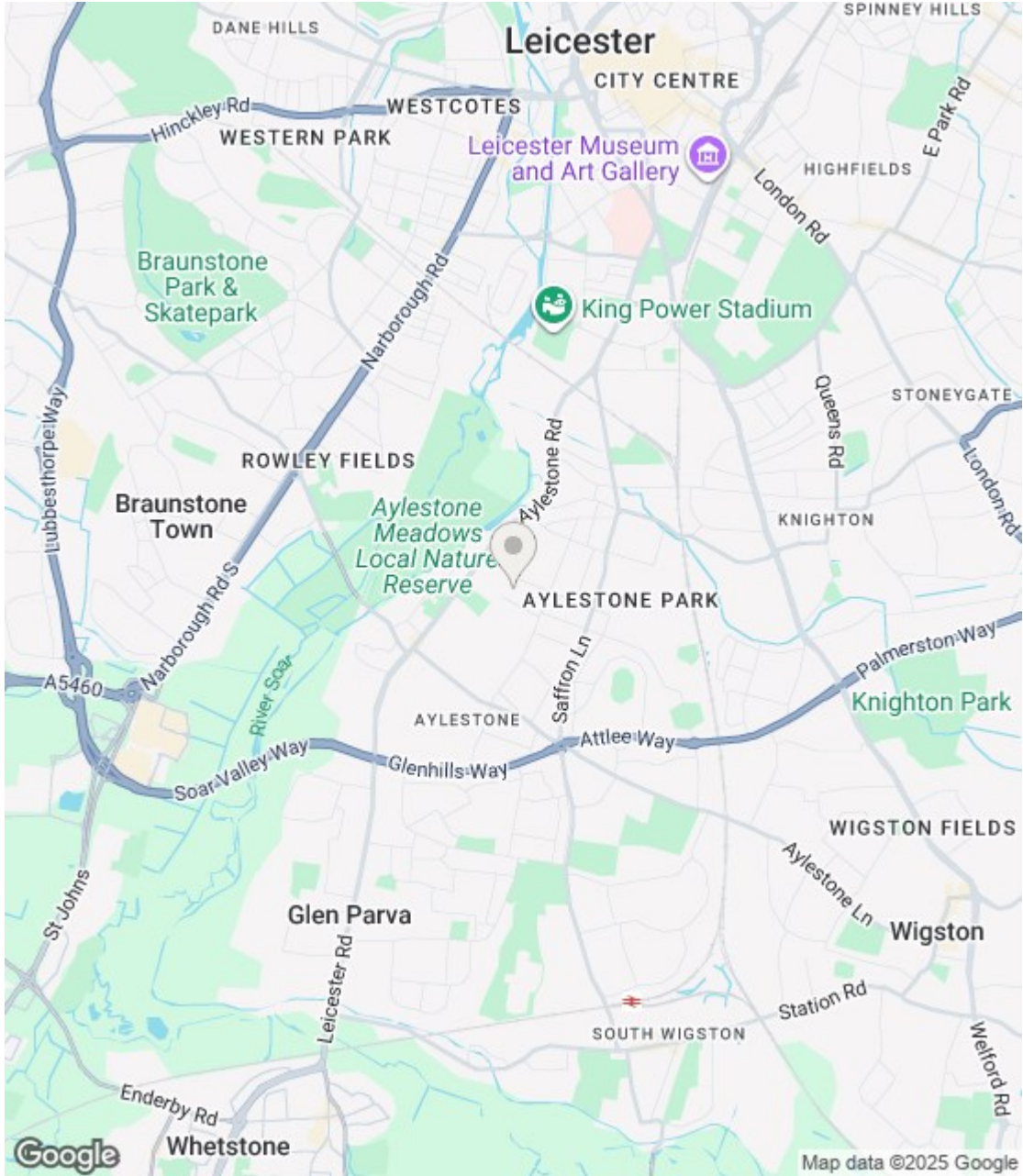
Energy Efficiency Rating

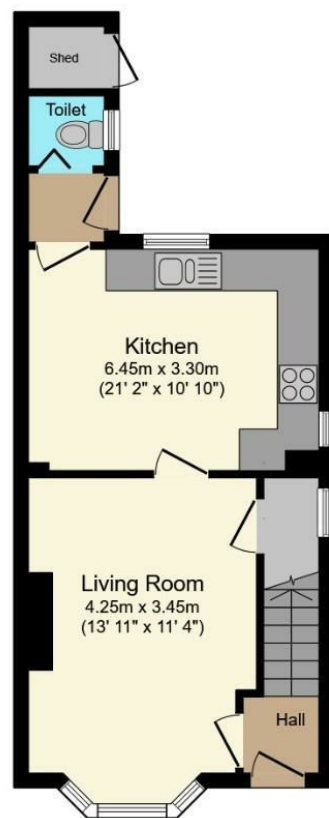
	Current	Potential
Very energy efficient - lower running costs		
(92 plus) A		87
(81-91) B		
(69-80) C		
(55-68) D	62	
(39-54) E		
(21-38) F		
(1-20) G		
Not energy efficient - higher running costs		
England & Wales	EU Directive 2002/91/EC	

Environmental Impact (CO₂) Rating

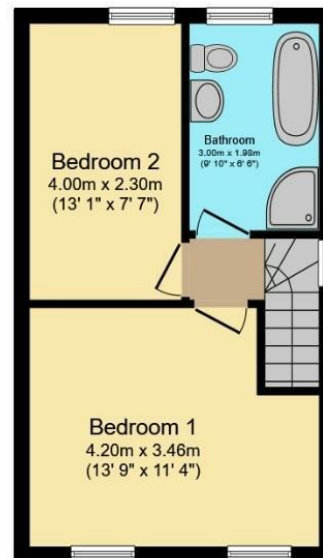
	Current	Potential
Very environmentally friendly - lower CO2 emissions		
(92 plus) A		
(81-91) B		
(69-80) C		
(55-68) D		
(39-54) E		
(21-38) F		
(1-20) G		
Not environmentally friendly - higher CO2 emissions		
England & Wales	EU Directive 2002/91/EC	

PRS Property Redress Scheme





Ground Floor



First Floor

Total floor area 67.7 m² (729 sq.ft.) approx

This floor plan is for illustrative purposes only. It is not drawn to scale. Any measurements, floor areas (including any total floor area), openings and orientation are approximate. No details are guaranteed, they cannot be relied upon for any purpose and they do not form part of any agreement. No liability is taken for any error, omission or misstatement. A party must rely upon its own inspection(s). Powered by www.focalagent.com

(1)MONEY LAUNDERING REGULATIONS: Intending purchasers will be asked to produce identification documentation at a later stage and we would ask for your co-operation in order that there is no delay in agreeing the sale. (2) These particulars do not constitute part or all of an offer or contract. (3) The description, measurements & specifications indicated have been approved by the Vendor, for guidance only and as such must be considered incorrect. While every effort has been made to ensure the accuracy of the information provided, we cannot be held responsible for any errors or omissions. Potential buyers are advised to recheck measurements before committing to any expense. (4) We have not tested any apparatus, equipment, fixtures or services and it is in the buyers interest to check the working condition of any appliances. (5) Financial Advice: Any financial information or advice provided in this brochure is not intended as financial or legal advice. We recommend that you seek independent financial and legal advice before making any decisions regarding property transactions. (6) Where an EPC, or a Home Report (Scotland only) is held for this property, it is available for inspection at the branch by appointment. If you require a printed version of a Home Report, you will need to pay a reasonable production charge reflecting printing and other costs. Energy Performance Certificates are available upon request. EPC ratings and related details are accurate as of the date of publication, but may change over time. (7) We are not able to offer an opinion either written or verbal on the content of these reports and this must be obtained from your legal representative. (8) Subject to Availability: All properties and prices are subject to availability and may be withdrawn or amended without notice. We do not guarantee the continued availability of any property listed in this brochure. (9) Third-Party Services: Any references to third-party services, such as solicitors, surveyors, or financial advisors, are for information only. We do not endorse or recommend any particular service provider. (10) Whilst we take care in preparing these reports, a buyer should ensure that his/her legal representative confirms as soon as possible all matters relating to title including the extent and boundaries of the property and other important matters before exchange of contracts. (11) Viewing Arrangements: Viewings of properties are by appointment only and should be arranged through the estate agent. (12) Legal Information: Buyers should verify all legal and planning details with the relevant authorities and professionals before proceeding with a purchase.